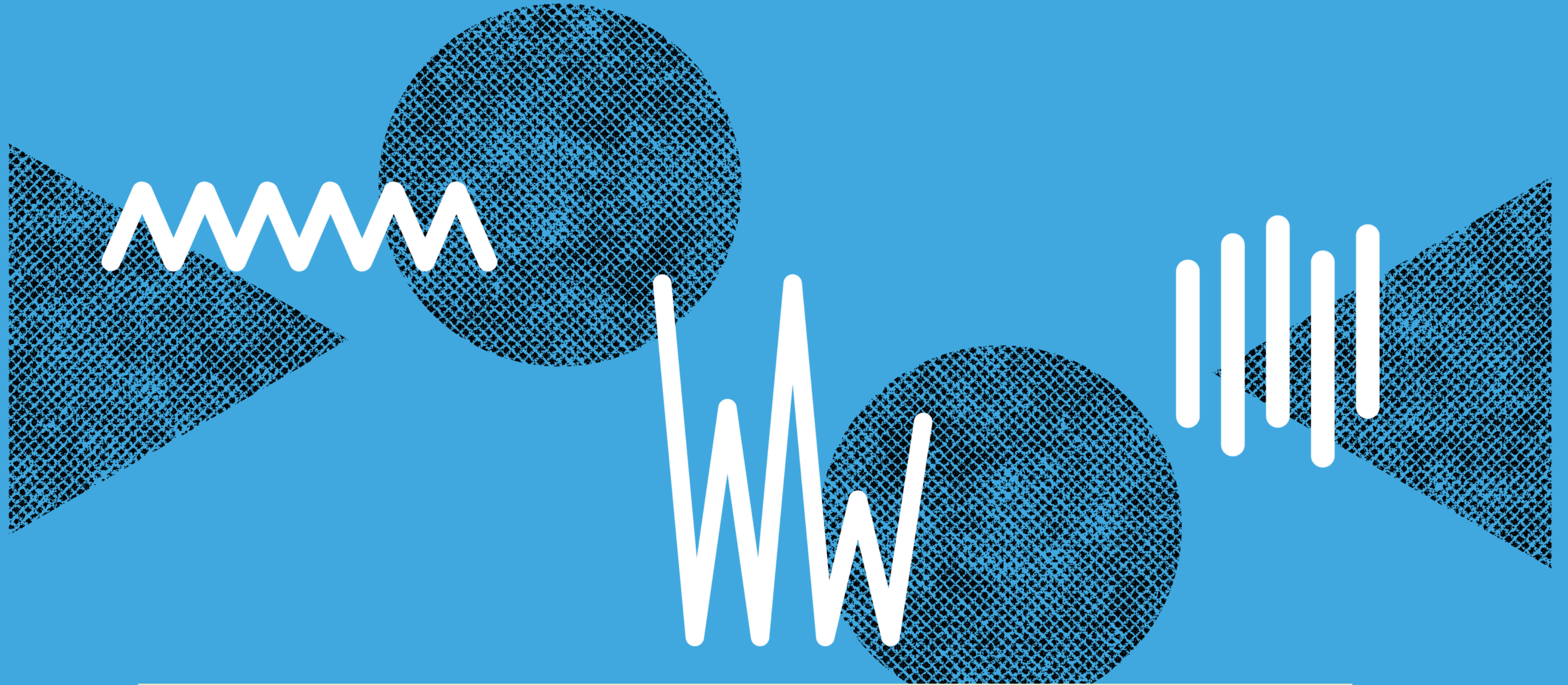


Annual Student Members Meeting

JM
SU



April 2026



Welcome & Thank You

**JM
SU**

Group Agreement

Respect All Voices

Everyone's perspective is valuable. Listen actively and respectfully without interrupting.

Confidentiality

Personal stories and shared experiences should not be repeated outside the ASMM without permission.

Ask Questions

There are no “stupid” questions. If you don’t understand something, ask for clarification.

Code of Conduct

Students are expected to conduct themselves in a manner that demonstrates respect for the university, its staff, fellow students, property and equipment, and the wider community.

Respect Always is a collaboration between the university and JMSU which aims to get to the heart of what respect means to us as individuals and to collectively recognise this across the university.



Your Student Officers

JM
SU

What is an Annual Student Members Meeting?

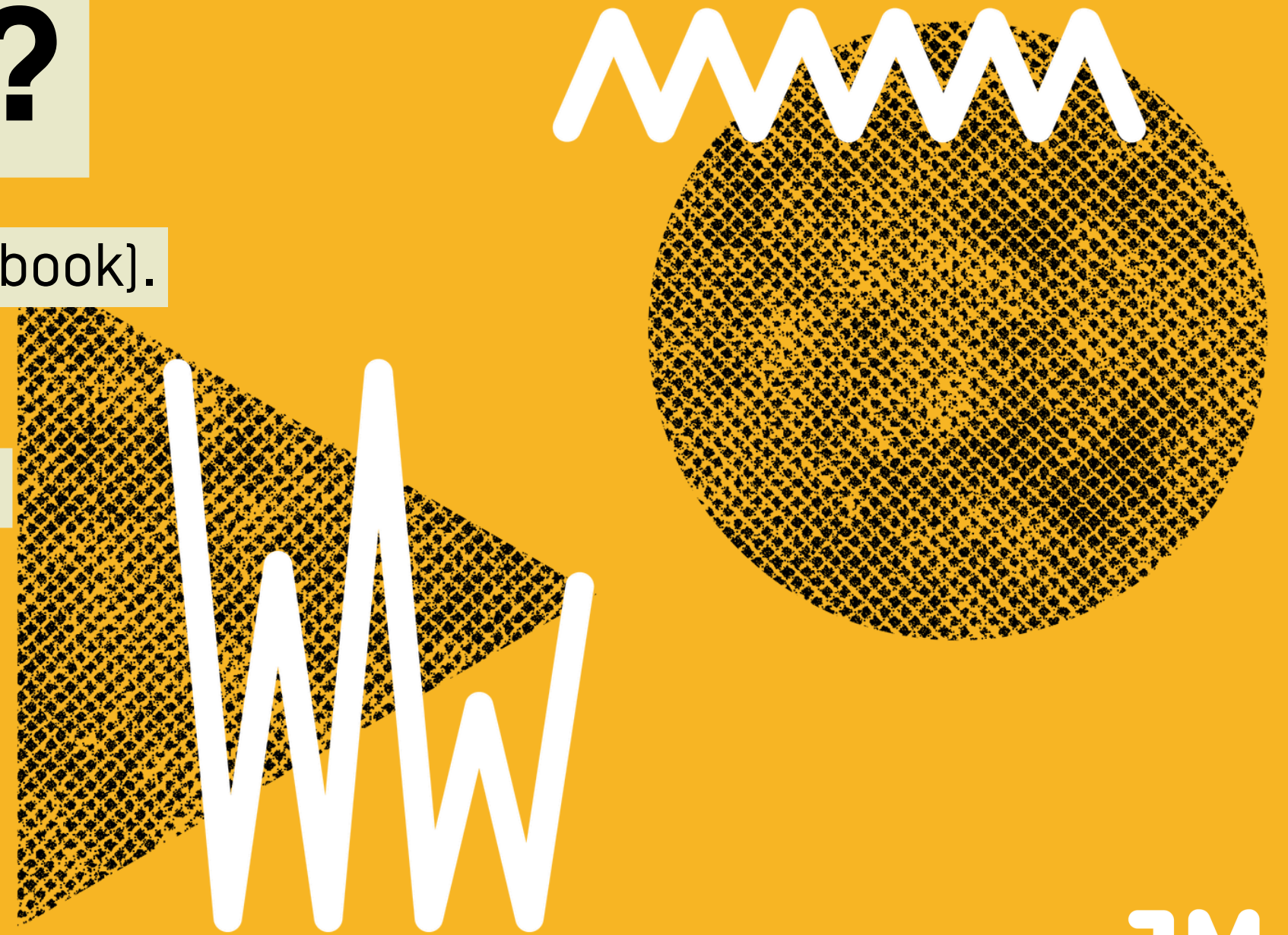
A constitutional requirement (it states it in our rule book).

Your yearly opportunity to hear from us about:

- What we've been doing – ask us some questions!
- How we've spent our money (2024-25 accounts)

Help us approve:

- The external organisations we affiliate with.



Agenda

Ratification of minutes of the previous annual Student Members' meeting.

Report of the Trustees on the Union's activities since the previous ASMM.

Formally presenting the accounts of the Union to the Student Members;

Associate Member Review.

Approve the list of affiliations of the Union.

Open questions to the JMSU Trustees by the Student Members.

Approval of ASMM Minutes 2025



Minutes have been available for the past 10 days.



Copies are available as you enter the ASMM.



Anyone who was at the ASMM last year to look and let us know of any issues.



Appreciate not everyone in the room was at the last AGM but needs to be approved for audit purposes.

Approval of ASMM Minutes 2025

Members at the 2026 Annual Student Members Meeting are asked to approve the minutes from the 2025 Annual Student Members Meeting.

Please Vote:

Yes

No

Abstain

Your Students' Union

Advocating for all 28,000 students studying at LJMU

Not for Profit

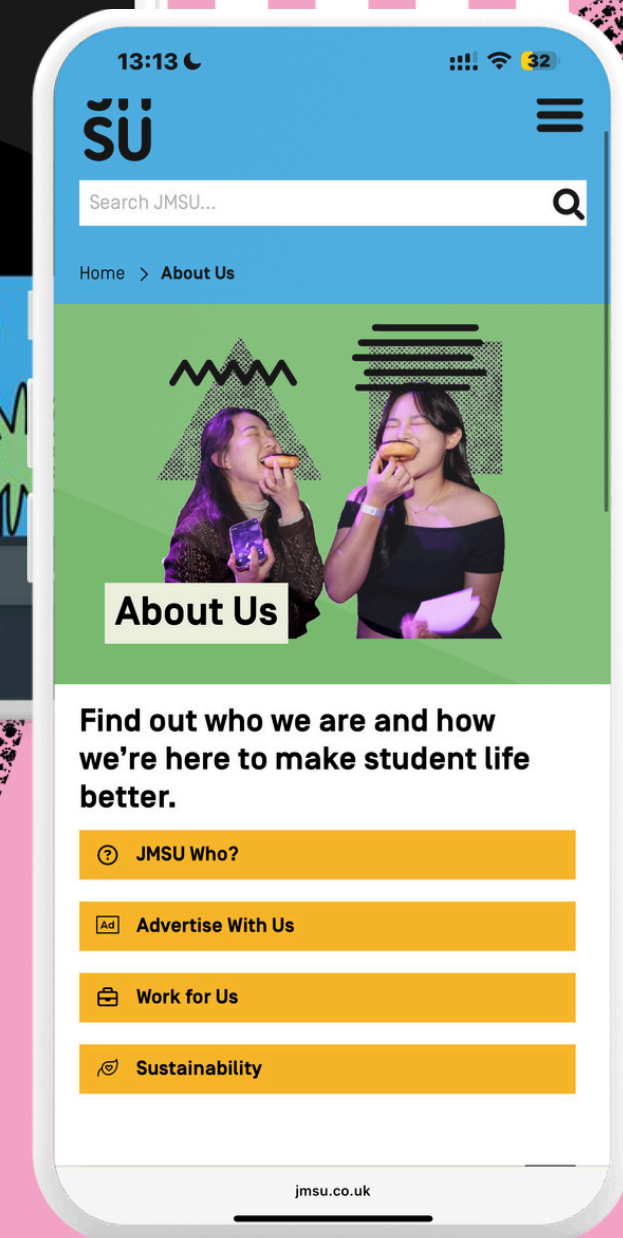
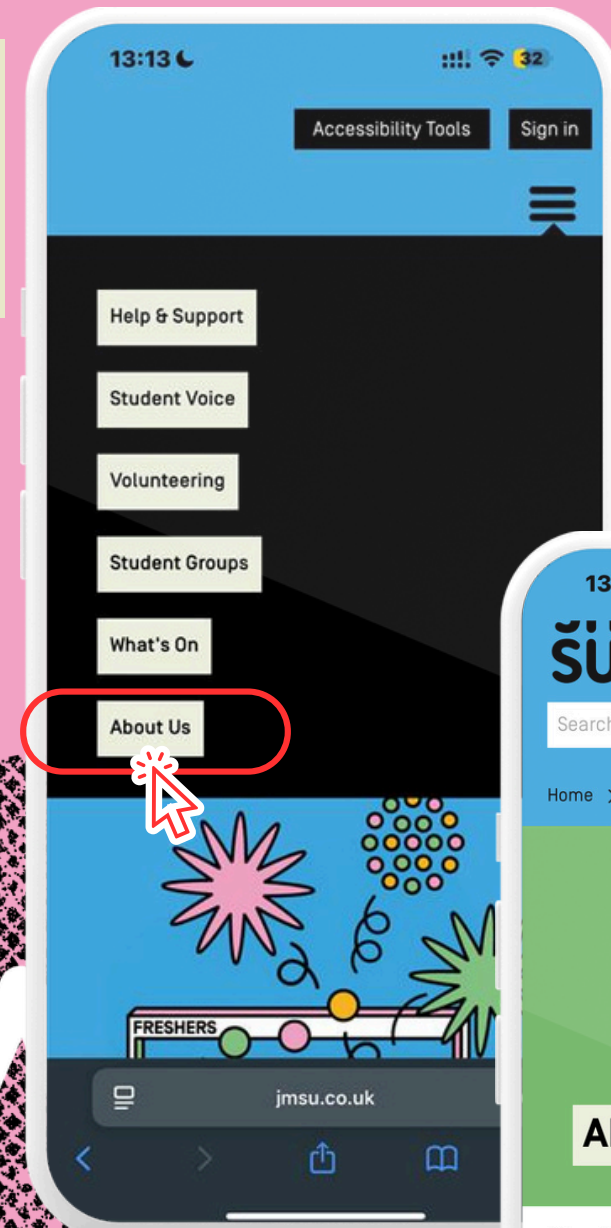
Charity (CIO)

Seperate Organisation

Independent Advice

Creating opportunities outside of the classroom

Championing equity, diversity, and inclusion



JMSU

Trustee Report

Over 10,300 Members in Student Groups

15 School Reps, 5 Student Voice Campaigners, 632 Course Reps

46th in the BUCS League

118 Societies

115 Volunteer Orgs over 300 Opportunities for 1600 Volunteers resulting in over 11,000 hours of volunteering!

120 Parent Hampers & 350 Fill Your Fridge Vouchers given out so far this academic year.

Over 5000 students engaged through Student Voice Insight





Your Officer Updates

JM
SU

Miles

Developed & delivered a plan to the Combined authority around a Student Transport Ticket alongside Etienne

Supported the University's Sustainability Week & the plans around Sustainability

Stood for the student voice at various University meetings, giving the student perspective on various aspects

Completed over 20 Staff Induction talks to create better collaboration between JMSU and University Staff

Developed the position for a EDI ambassador role with the student union for the next academic year

Got Water fountains installed on the City Campus in certain buildings

Co-ordinated with the team a paper around developing an essentials area for students, which would include a food pantry & clothes swap

Created & delivered a housing fair for students to view different private landlords & agencies

Supported the University in removing Costa Coffee on campus and replacing it with Change Please

Supported the Renters Right Act with various communications & pop ups on campus

Etienne

Manged to secure funding from the D&I team and developed a sensory room in Byrom street campus.

Co-planned & Presented JMSU Wellbeing Forums throughout the year in collaboration with LJMU Wellbeing Team.

Delivered a dedicated month for Women in March based off feedback from earlier in the year.

Planned with The Guild and Hope SU Reclaim the Night march through Liverpool taking a stance on making Liverpool's streets safer for women and girls.

Supported the development of a 'Student Transport ticket across Merseyside' alongside other Sabbs across the City.

Inputted on the Disability Policy & the Student Mental Health Charter alongside the Universities different teams.

Created a new mental health initiative called 'Mindful Mondays' which happen one Monday everyone month doing activities that enhance student's wellbeing.

Represented the JMSU / LJMU feedback at the Student Strategic Board in the Wider City Region.

Erin

Created & delivered 'Profile Powerup Event' which supports students in academic opportunities across the university for development inside & outside the classroom!

Supported the creation of a Canvas AI assistant that is being piloted across multiple different courses which enhances and delivers on various questions.

Supporting nursing school on a sustainable uniform swap shop.

Secured Longer hours during the assessment period in City Campus Library 27th April to 8th May 8:45am to 9pm.

Given the student input on new regulations / the policy has been made for the management of AI misconduct

Helped conclude the decision of recorded lectures across the university to improve support and revision for students during assessment periods.

Gathered Student consultation to help redesign of the Mount Pleasant Library, creating a space / environment which students feel more comfortable in!

Working on getting extra curricular work onto an official document signed by LJMU (diploma supplement)

Societies can now book library spaces, creating a higher footfall around campus and supporting socs during busy assessment periods

Josh

Delivered the 'Look after your mate training', where we hosted sessions for 50 student leaders to help them in supporting the members within student groups.

Ran campaigns for Movember & LGBTQ+ within sports / societies to get involved in.

Have become a BUCS Student Officer to help support and deliver positive student experience around sport .

Visited over 15 Sports club for Social Media Promotion to increase cross club collaboration & participation.

Created & completed a Society Spotlight Week in February.

Met with over 50+ Sports & Society Committee members to allow for ease of communication between Student Groups & the SU.

Liaised with Lloyds Bank, we are in the final stages of securing a grant for equestrian to get a £1000 donation.

Delivered a dedicated month for Women in March based off feedback from earlier in the year.

Team Priorities & Goals

Increasing SU Visibility and Awareness

- Attended various Recruitment events to promote the Student Union
- Supported University wide activations / pop ups
- Encouraged SU events to University wide not just within the SLB
- Enhanced Staff knowledge through engagement in person to promote the SU
- Internally discussed the 're-design of SU' spaces around campus

Make Communication Simple and Accessible

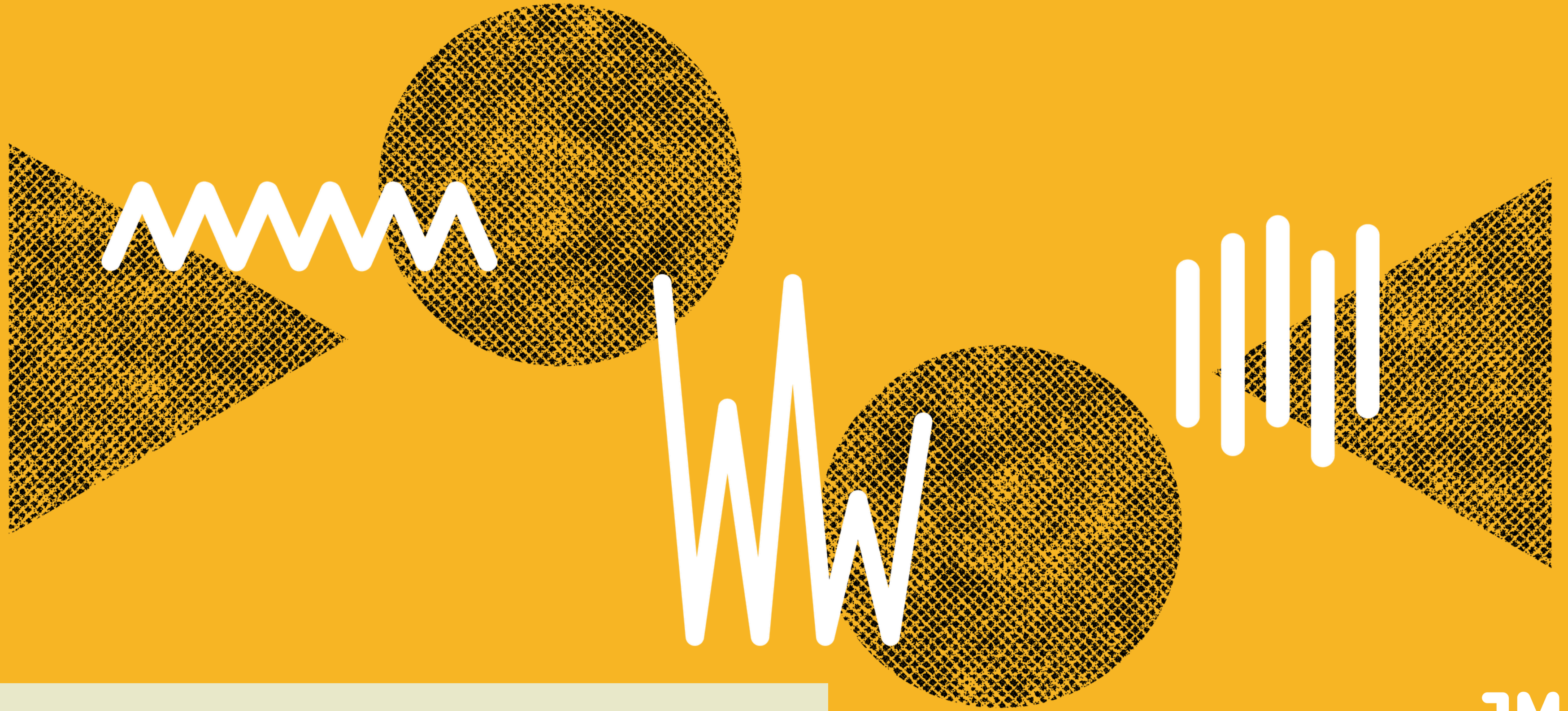
- Collaborated with the University on Assessments, Student Futures, Library Services & Wellbeing Support understanding with different IT initiatives around Campus

Improving Student Living

- Supported the on-going talks around Liverpool Student Homes (LSH) with the potential shift to Uni Poll as a provider
- Provided Student Insight to the Renters Right Act across the city & supported Communications out to students

Raising Mental Health Awareness

- Enhanced the Movember Campaign to see the true impact of what Movember does
- Created the 'Look after your mate' training sessions at the beginning of the year
- Created a programme of activities around a 'Mindful Monday' Scheme



Any Questions?

**JM
SU**

Affiliations

Any affiliations are proposed links to outside organisations that support our aims. The main body of affiliations lies within the student group area via sports and societies.

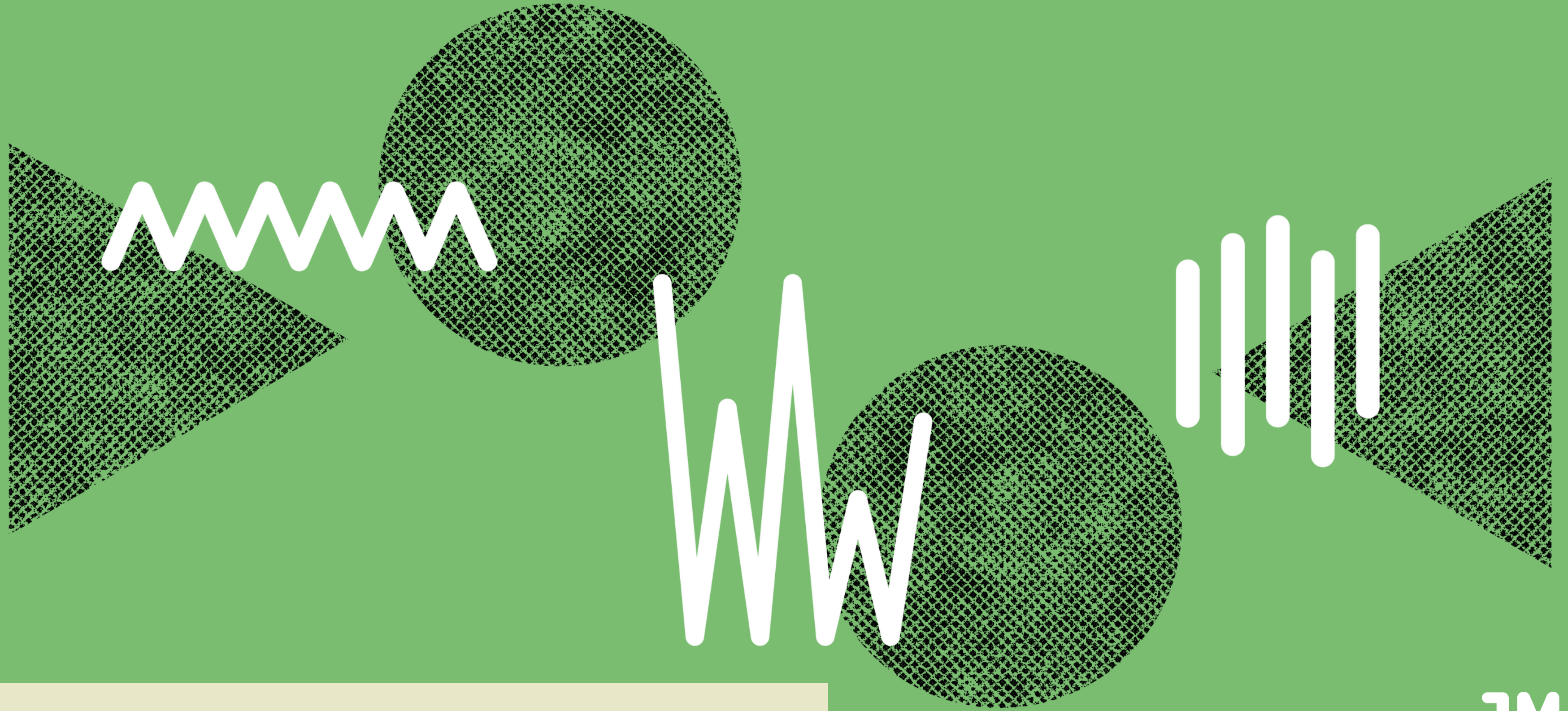
Members are asked to approve the list of affiliations today.

Activity	Organisation	Reason for affiliation	Expected Cost
Advice for Students	Advice UK	National body of advice centres, offering service and policy development	Circa £1,000
American Football	British Universities American Football League (BAFA)	1.NGB requirement for American Football to compete in University Leagues.	£1,200
American Football	British Universities American Football Referee Association (BAFRA)	NGB requirement for American Football Referees.	£100
Athletics	United Kingdom Athletics (UKA)	NGB Requirement for Athletic members to compete in Competitions.	Paid per member
Archery	Archery GB	Affiliation for the club to compete in competitions	£200
Badminton	Badminton England (BE)	NGB Requirement for Badminton to play in Local and University Leagues.	£100
Basketball	Basketball England (BE)	NGB requirement for Basketball to compete in the University League.	Paid per member
Boxing	England Boxing	Affiliation members to compete in National competitions	£190
BUCS	British University Colleges Sport (BUCS)	Affiliation to compete as an institution.	£13,938
BUCS	British University Colleges Sport (BUCS)	Affiliation for each individual team to compete in the University Leagues.	Circa £7,500
Brazilian Jiu Jitsu	UK Brazilian Jiu Jitsu Association	Affiliation to compete as an institution.	£150
Climbing	British Mountaineering Council (BMC)	NGB Requirement for Climbing members for outdoor climbing.	£260

Activity	Organisation	Reason for affiliation	Expected Cost
Cricket	English Cricket Board (ECB)	NGB affiliation for Cricket activity.	£0.00
Cycling	British Cycling	NGB affiliation to compete in Cycling competitions.	£100
Darts	University Darts UK	NGB requirement for Darts to compete.	£40
English Universities	English Universities Sports	Affiliation for students to enter the Home Nations.	Circa £550
Engineering	Institution of Engineering & Technology (IET)	Affiliation provides resources and funding for members.	£0.00
Football & Futsal	Liverpool County Football Association	NGB requirement for Football and Futsal to compete in University Leagues.	£350
Gaelic Football	Gaelic Games Council of Britain & British University Gaelic Athletic	NGB requirement for Gaelic Football to compete in University league.	£245
Golf	England Golf	NGB requirement for Golf to receive funding	£0.00
Handball	England Handball	NGB requirement for Handball to compete in University League.	£140
Hockey	England Hockey	NGB requirement for Hockey to play in University and Local Men's Leagues.	£0 (Included in BUCS Affiliation)
Jiu Jitsu	The Jiu Jitsu Foundation	NGB requirement for Jiu Jitsu to compete and train.	£300
Jewish	Union of Jewish Students	Receive support, guidance, and resources to help the society.	£0
Karate	Karate Union of Great Britain (KUGB)	NGB requirement for Karate activity.	£780 (£30.00 per member)
Islamic	Federation of Islamic Student Societies	Affiliation by Islamic Society to their student body.	£0

Activity	Organisation	Reason for affiliation	Expected Cost
Lacrosse	English Lacrosse	NGB requirement for the Lacrosse Club.	£201.50
Mixed Martial Arts (MMA)	English Mixed Martial Arts Association	NGB affiliation for MMA activity/competition.	£0
Netball	England Netball	NGB affiliation for Netball activity.	£0
National Student Representation	National Union of Students (NUS) UK	NUS UK = campaigning nationally to improve the lives of students and delivering tangible impact for the student movement.	NUS UK 2% Capped at £30,000
National Student Representation	NUS Charity	NUS Charity = developing and championing strong students' unions through advice, guidance and crisis support.	NUS Charity 0.5% Capped at £7,500
Powerlifting & Weightlifting	British Weightlifting	NGB affiliation for competition	£35
Pickleball	Pickleball England	NGB affiliation for Pickleball activity.	£0
Radio	Student Radio Association	Affiliation to Broadcast	Circa £450
Rowing	British Rowing	NGB requirement for Rowing activity.	£210
Rounders	Rounders England	NGB affiliation for Rounder's activity.	£80
Rugby League	Rugby Football League (RFL)	NGB requirement for Rugby League to compete in University League	£200
Rugby Union	Rugby Football Union Referees	Affiliation to the referee association to provide referees for Rugby Union	£300
Rugby Union	Rugby Football Union (RFU)	NGB Requirement for Rugby Union to compete in University League	£0

Activity	Organisation	Reason for affiliation	Expected Cost
Snowsports	Snowsports England	NGB affiliation for Ski and Snowsports for activity/competition.	£150
Table Tennis	Table Tennis England	NGB affiliation for Table Tennis for activity/competition.	£0
Trampolining	British Gymnastics	Affiliation for members to compete in Trampolining competitions/activity.	Paid Per Member
Trampolining	Northern English Universities Trampolining League	Affiliation for Trampoline to compete in a Northern University League	£100
Ultimate Frisbee	UK Ultimate	NGB requirement for Ultimate Frisbee to compete in a University League.	£24.50 Per Member
Volleyball	Volleyball England	NGB requirement for Volleyball to compete in BUCS and local leagues.	£74



Any Questions?

**JM
SU**

Audited Accounts Report 2024-25

A quirk of companies and charities that hold an ASMM is that you (our members) are asked to approve the previous year's accounts.

However, this means the money has been spent already!

This money has gone through our external, independent auditors and has been given a 'clean audit' meaning they have found no causes for concern.

The following few slides give an overview of what we spent and spend our money on.

Accounts

The Union received ~£2.2m of income and spent ~£2.0m on delivering our charitable objectives.

During the year, the Union was supported by additional funding from the University to clear the liabilities in its pension fund.

The Union was therefore able to remove £2.85m of future costs from its accounts.

This meant that the Union ended the year with ~£478k of general funds (our reserves), £126k in designated funds to support activities in 2025/26, and not owing any further money to its pension scheme.

Accounts

Most of our funding (£2.1m [24/25] & £1.75m [25/26]) continues to come directly from the University as a block grant.

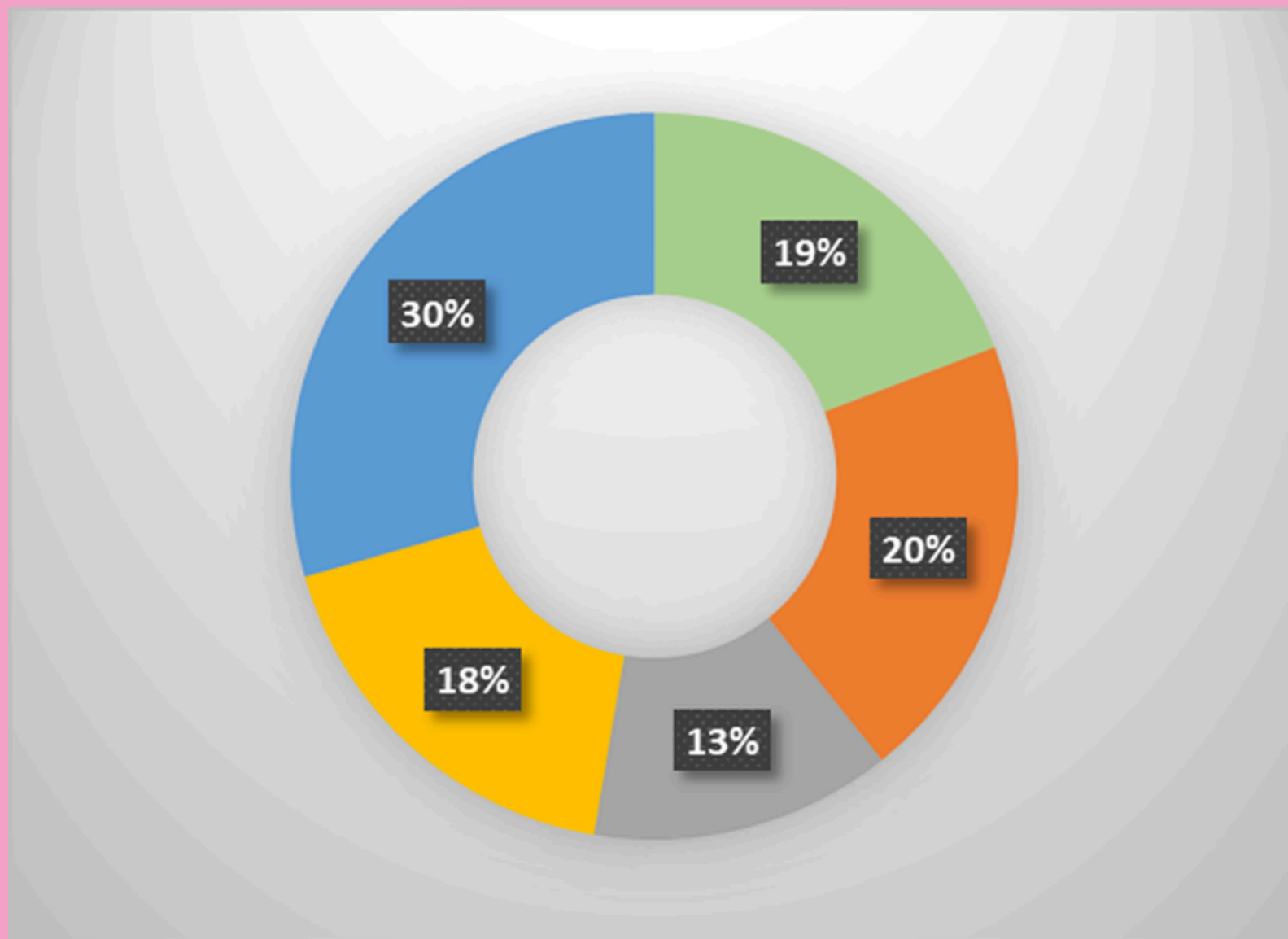
We also generate funds through our trading subsidiary company (Liverpool Student Media Limited), mainly by selling exhibition spaces and advertising opportunities throughout the year.

We've employed over 17 students during the year, putting over £50,000 back into student pockets in wages.

100% of what we spend is on day-to-day charitable activities, including providing support and facilities for LJMU students.

Student groups and activities, and our advice and representation functions receive the largest allocation of funding outside of central core costs.

Accounts 24-25: Expenditure Breakdown



- Green – Student Voice & Campaigns ~£415k
- Orange – Student Activities ~£432k
- Grey – Marketing & Comms ~£289k
- Yellow – Projects & Events ~£385k
- Blue – Central Services ~£635k

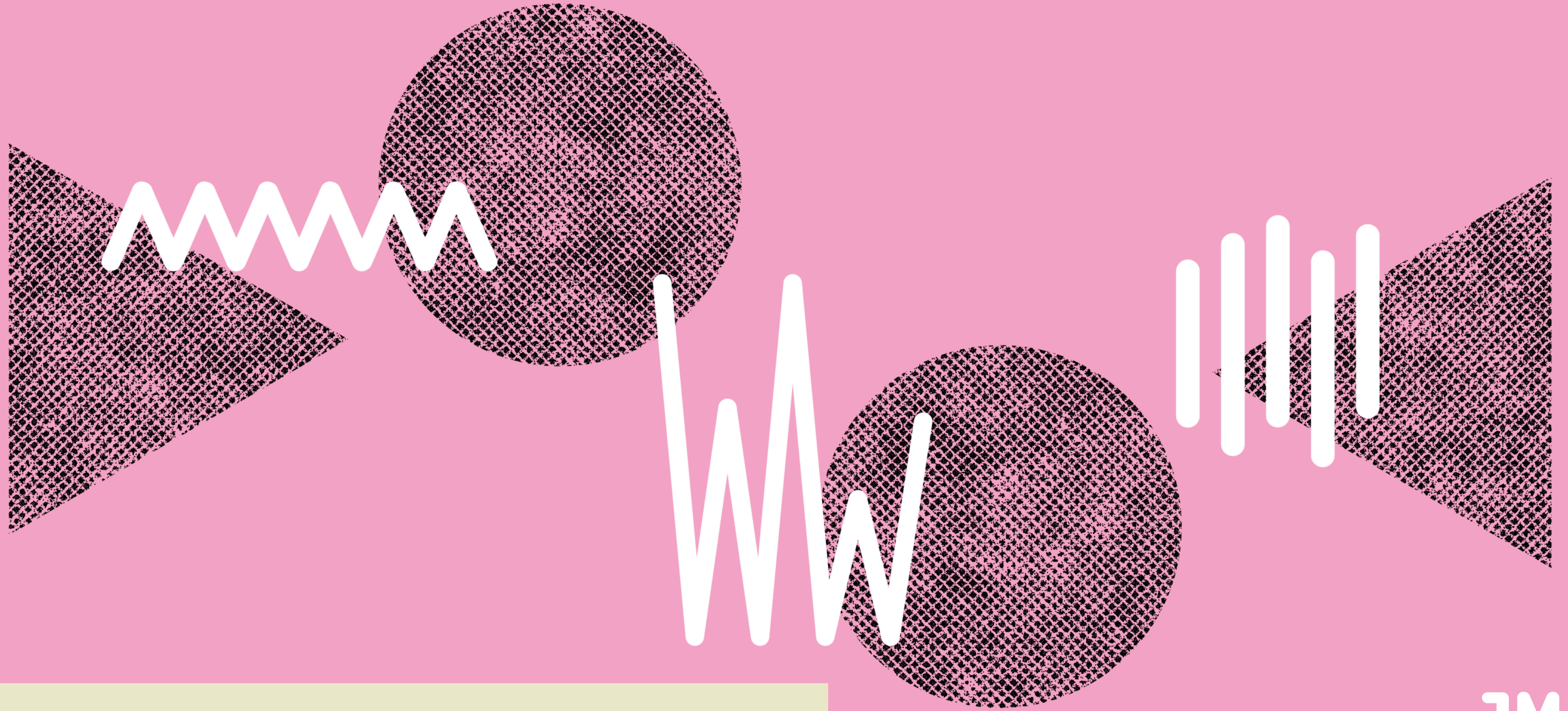
SUSS Pension Scheme

The Union is a member of SUSS – the Students' Union Superannuation Scheme – along with NUS and 60 other Students' Unions.

The scheme is now closed to future members, and up to the end of 2024/25 the Union owed money to cover its share of the total pensions in the scheme, and was making annual payments of c. £250k towards those costs.

In 2024/25 the University provided the Union with additional funding to pay off what it owed to the scheme. The Union no longer has any financial liabilities towards the pension scheme, and will make no further annual payments.

The accounts now show that the Union has a positive balance sheet with no further pension debts.



Any Questions?

JM
SU

Associate Member Review

Proposed Change: Associate Membership

- We are proposing to remove Associate Membership entirely
- This means JMSU membership will be focused on LJMU students only
- Change proposed to take effect from 1st August 2026

Who this affects:

- Alumni
- Non-LJMU students e.g. UoL Students
- Staff
- Others currently signed up as associate members

Associate Membership



Why remove Associate Membership?

Safeguarding & Safety Risks

Hard to verify who people are and limited ability to enforce policies.

Governance & Accountability

We are responsible for students, but not non-students and lack of clarity over who we represent.

Fairness & Focus

Prioritising resources for LJMU students, strengthening belonging, voice, and success.

Sector Practice

Many Students' Unions have already removed this e.g. Bristol SU found risks outweighed benefits.

Associate Membership



What could this impact?

- Some student groups may lose non-student members
- Joint / cross-university societies may need to change structure
- Early engagement (before LJMU login) may be slightly different

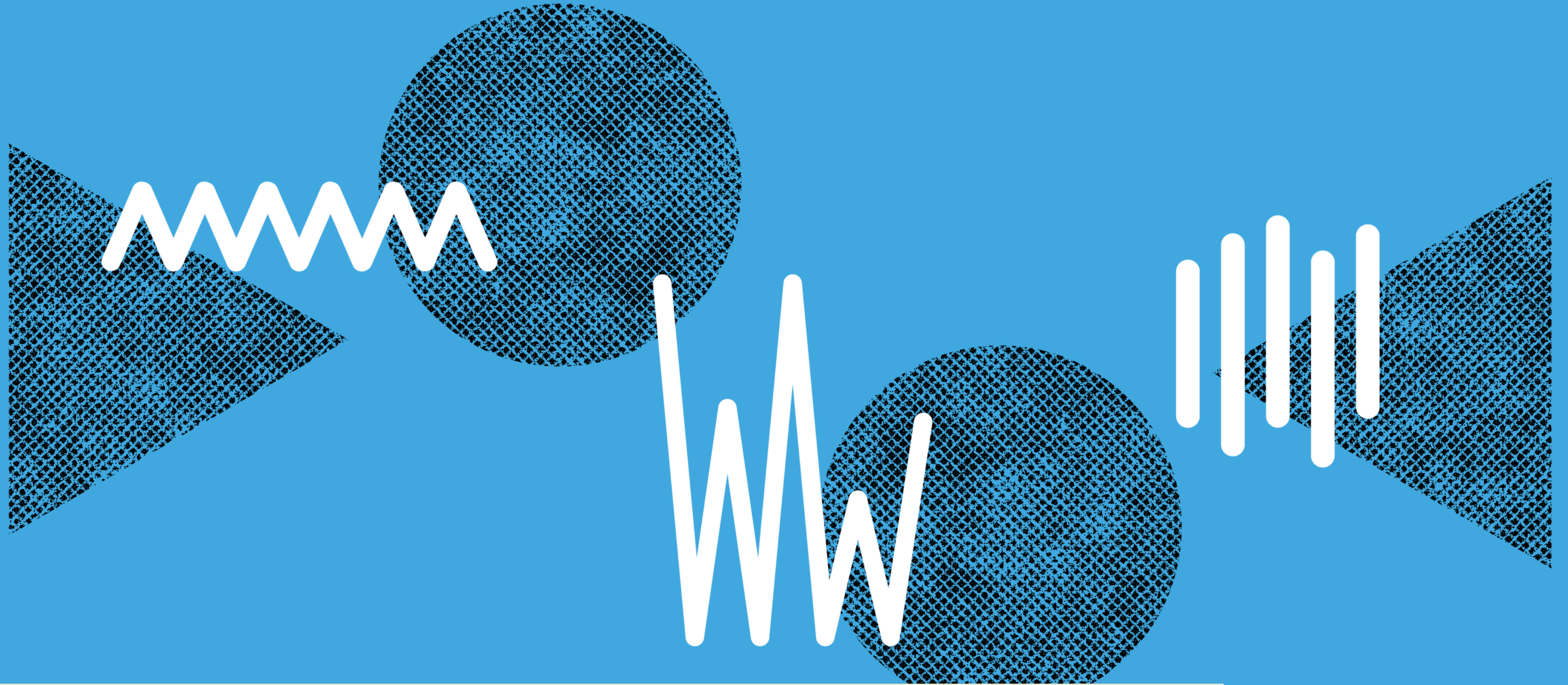
What we're doing next:

- Consulting with student groups and members
- Working through practical impacts and support
- Updating policies and guidance

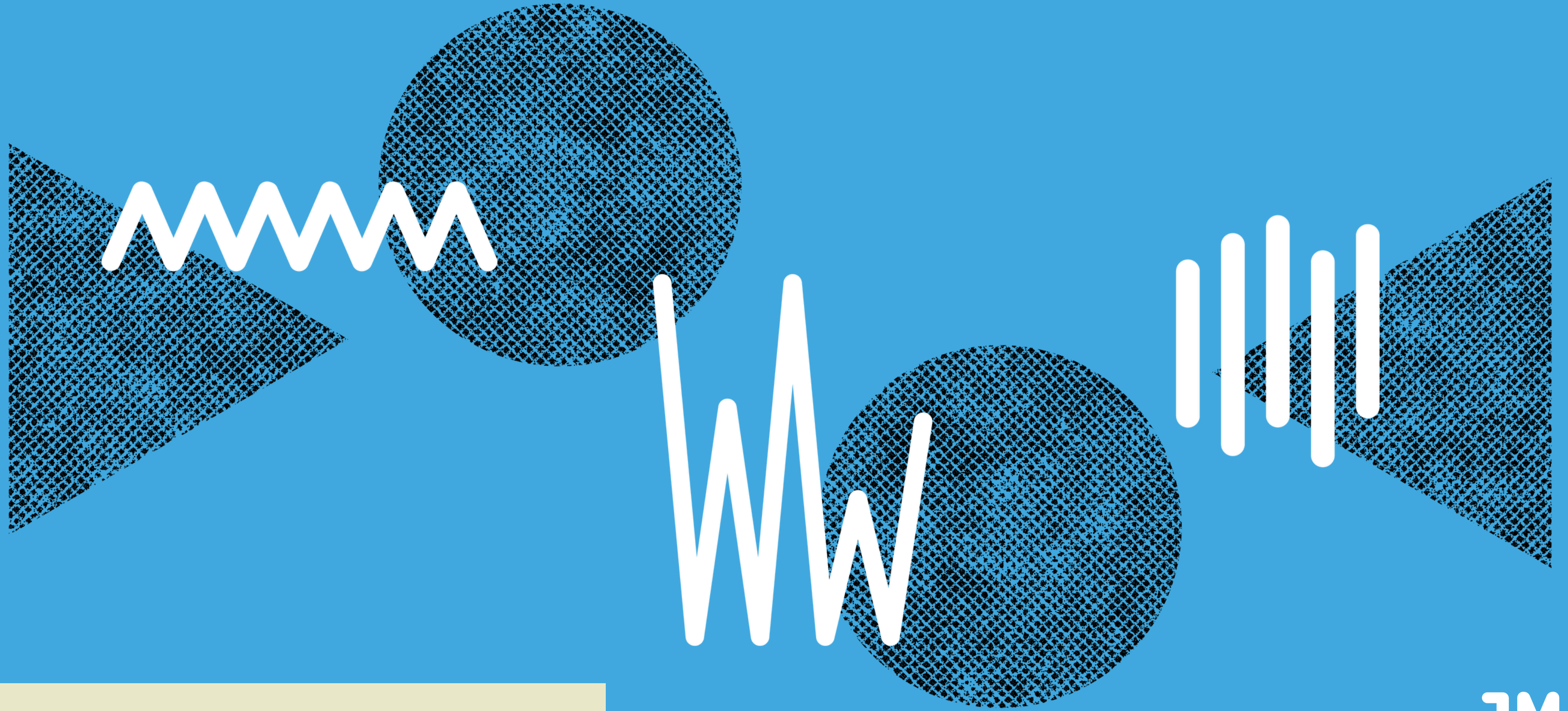
We want your input:

- Questions?
- Concerns?
- What should we consider as we implement this?

This is about getting the balance right between opportunity, safety and fairness.



Membership Questions



Thank You!

**JM
SU**

Let's Stay Connected



0151 231 4900



StudentsUnion@ljmu.ac.uk



www.jmsu.co.uk



@johnmooreessu

Follow us on
Instagram

